



Melbourne Archdiocese  
Catholic Schools



[CONTENTS](#)

[PRINCIPAL'S NEWS](#)

[NURSES NEWS](#)

[LEARNING & TEACHING](#)

[CO-CURRICULAR  
NEWS](#)

[WELLBEING](#)

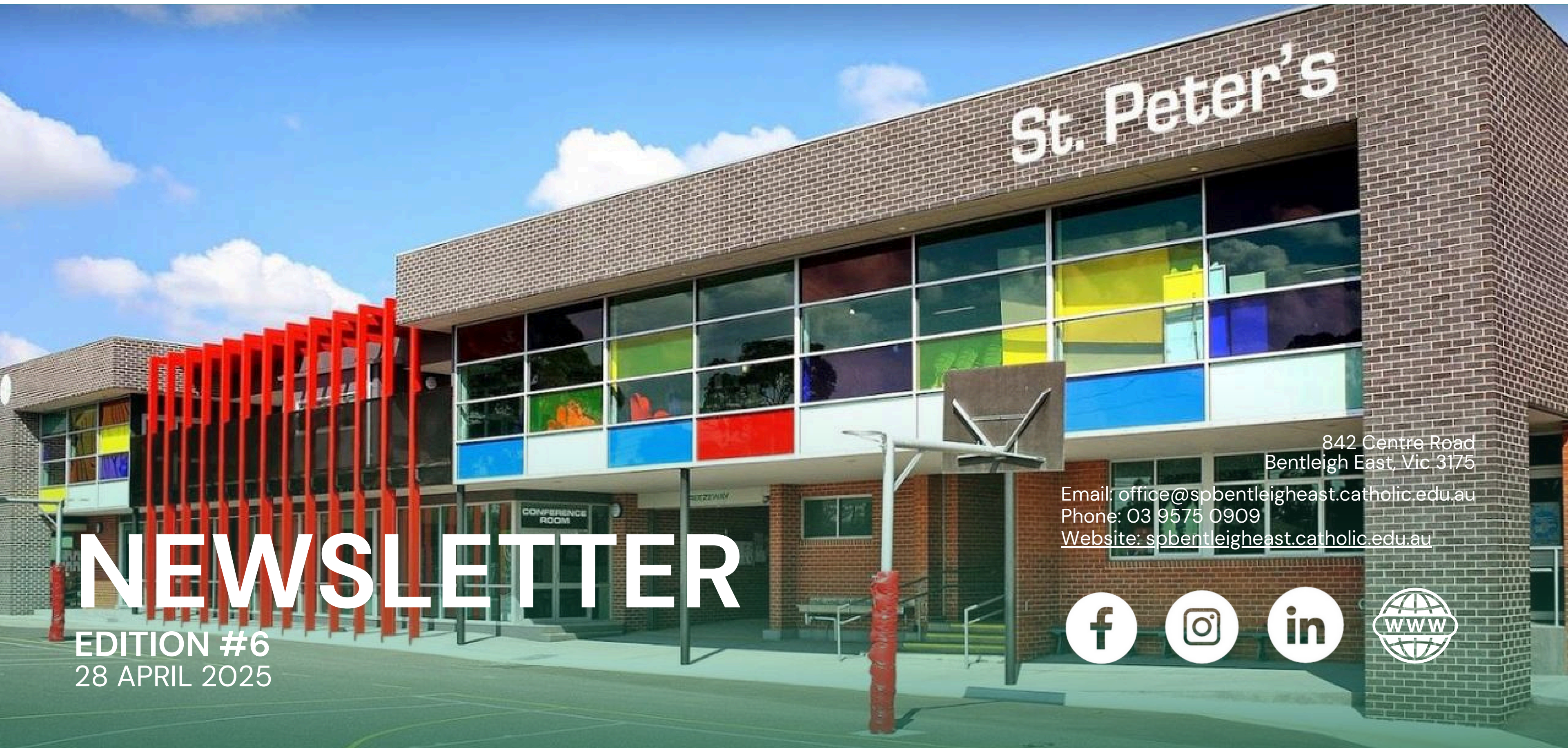
[IMPORTANT DATES](#)

[FAITH & COMMUNITY](#)

[P&F NEWS](#)

[PARISH NEWS](#)

[COMMUNITY  
NEWS](#)



St. Peter's

842 Centre Road  
Bentleigh East, Vic 3175

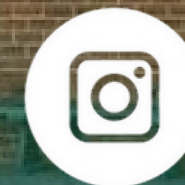
Email: [office@spbentleigheast.catholic.edu.au](mailto:office@spbentleigheast.catholic.edu.au)

Phone: 03 9575 0909

Website: [spbentleigheast.catholic.edu.au](http://spbentleigheast.catholic.edu.au)

# NEWSLETTER

EDITION #6  
28 APRIL 2025





# CONTENTS

[PRINCIPAL'S NEWS](#)

[LEARNING & TEACHING](#)

[WELLBEING](#)

[FAITH & COMMUNITY](#)

[NURSES NEWS](#)

[CO-CURRICULAR  
NEWS](#)

[IMPORTANT DATES](#)

[P&F NEWS](#)

[PARISH NEWS](#)

[COMMUNITY  
NEWS](#)







[CONTENTS](#)

[PRINCIPAL'S NEWS](#)

[LEARNING & TEACHING](#)

[WELLBEING](#)

[FAITH & COMMUNITY](#)

[NURSES NEWS](#)

[CO-CURRICULAR  
NEWS](#)

[IMPORTANT DATES](#)

[P&F NEWS](#)

[PARISH NEWS](#)

[COMMUNITY  
NEWS](#)



MRS JANE WARD  
PRINCIPAL

# PRINCIPAL'S NEWS

STUDENT FREE DAY  
Tuesday 10 June  
Staff Professional Learning

Welcome to Term 2.

We hope all of our families were able to enjoy some rest over the recent school holidays. We have a big term ahead with Year 5 Camp, the official opening and blessing of our oval and many other exciting events that we look forward to sharing with you. Please [click here](#) to access the Term 2 calendar.

## School Values

In working through redefining our school values, we have sought input from staff, students and families. As a school community we have decided upon five values which encapsulate who we are, and who we aspire to be.

**Respect, Belonging, Kindness, Gratitude and Knowledge.**

We will officially launch these next year, but in 2025 they will be used alongside our Keys to Success.

At the final assembly last term, I spoke with students about Respect and the role that each of us has to ensure that everyone in our community feels respected and valued. Part of the respect we show in the classroom is to call adults by their title, eg. Miss, Mr, Mrs. This is a change for our Learning Support staff and we know that it will take some time to get used to, but it is just one way that we can show respect to each other.

## Pope Francis

It was with great sadness last week that we learned of the passing of Pope Francis, a humble and inspirational leader of the Church. Please pray for the repose of his soul and for those who will make decisions regarding the future leadership of the Catholic Church.

Heavenly Father,  
Grant eternal rest unto Pope Francis,  
whose unwavering faith and inspired  
ministry enriched people all over the world.  
May his care and concern for those on the margins,  
for the future of our world and his efforts to  
follow in the footsteps of Christ,  
serve as inspiration to all of us to follow  
our Lord and serve with humility and gentleness.  
Amen

***"May the God of  
HOPE fill you with all  
JOY and PEACE"***  
**Romans 15:13a**





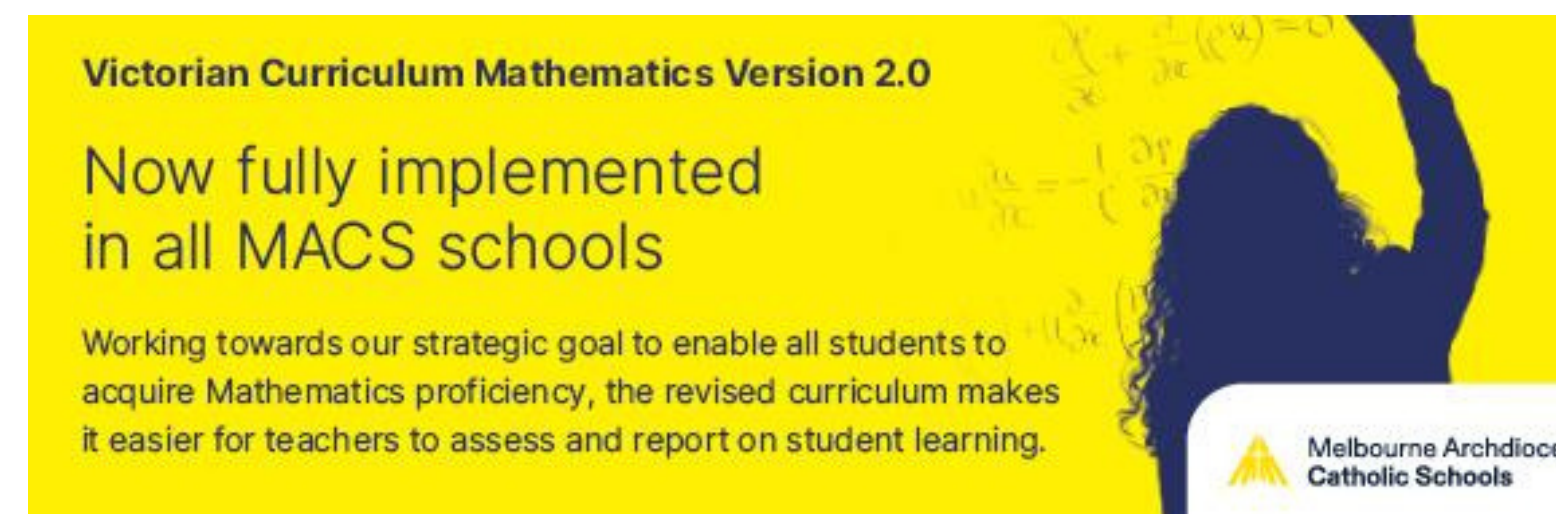
# LEARNING & TEACHING

## Curriculum Updates

We are excited to inform you about the latest update from the Victorian Curriculum and Assessment Authority (VCAA). The revised Mathematics Curriculum, Version 2.0, is now fully implemented in our school. Here are the key points you need to know:

- **New achievement standards:** The revised Mathematics Curriculum includes changes to the achievement standards used by teachers to assess and report student learning from Foundation to Year 10.
- **Aggregated reporting:** Under the new curriculum, teachers will report against the achievement standard as a whole, providing a single, aggregated score in Semester 1 and Semester 2.
- **Alignment with local curriculum:** Our school's teacher judgements align with our Mathematics Curriculum program.
- The initial Semester 1 report will only show achievement, while the Semester 2 report will display both achievement and growth for the strands covered in Semester 1.
- **Strand-level information:** Our school has recorded and used information from each of the six strands in Mathematics Version 2.0 to provide feedback on student progress.
- **Guidance for reporting:** As a school we decided to share strand-level achievement data within your child's school report, this information is supported within the report with an outline of how the overarching teacher judgement was made.
- **Holistic judgement:** As a school our teachers use learning evidence from the strands taught each semester to make a holistic judgement that accurately reflects where your child is on the learning continuum for Mathematics Version 2.0.

If you have any questions or need further information, please do not hesitate to contact us.







## Wellbeing Tip

The [Raising Children](#) website has some useful resources including a range of resources on school age behaviour.

# WELLBEING

## Setting Boundaries and Consequences - Supporting Your Child's Success at School

At St Peter's we are committed to creating a positive and respectful learning environment where every student can thrive. A vital part of this involves supporting children to understand appropriate behaviour – both at school and at home.

Providing children with clear boundaries and consistent consequences is essential for their emotional, social and academic development. Boundaries help children feel secure, clarify expectations and guide them towards making positive choices. When consequences are applied consistently, children develop a stronger sense of responsibility, resilience and respect for others.

At home, it's important for parents to establish firm, consistent boundaries rather than giving into demands. While it may feel easier to avoid conflict in the short term, children who are not used to hearing "no" may find it challenging to adjust to the structured environment of school, where rules and routines are shared by all.

Equally, parents play a key role in helping their child navigate disappointment and setbacks. Shielding children from every frustration can hinder their ability to cope with challenges. Instead, supporting children to manage their emotions and bounce back from difficulty builds the resilience they'll need to thrive in a collaborative school and the wider community setting. At school, students are part of a larger community. They are expected to co-operate, compromise, show respect and engage meaningfully in their learning. Children who have not had opportunities to practise self regulation or experience the consequences of their actions may struggle in this environment.

By working together, school and home, we can help children develop the life skills they need to become confident, respectful and capable people.





# FAITH & COMMUNITY

## ANZAC Day Ceremony

On Friday, 25th April, five of our Year 6 student leaders had the honour of representing St Peter's School at the Bentleigh RSL ANZAC Day Ceremony. They were accompanied by Mrs Jane Ward as they participated in laying a commemorative wreath on behalf of our school community.

It was a beautiful sunny day, perfect for gathering to remember and give thanks. Our students demonstrated great respect, reverence, and maturity throughout the ceremony, standing proudly among representatives from many different community groups and schools. It was a moving opportunity for them to reflect on the sacrifices made by Australian servicemen and women, both past and present and to show gratitude for the freedoms we enjoy today.

We are very proud of the way our student leaders represented St Peter's and upheld the spirit of ANZAC in such a thoughtful and dignified manner. Lest We Forget.







[CONTENTS](#)

[PRINCIPAL'S NEWS](#)

[LEARNING & TEACHING](#)

[WELLBEING](#)

[FAITH & COMMUNITY](#)

[NURSES NEWS](#)

[CO-CURRICULAR  
NEWS](#)

[IMPORTANT DATES](#)

[P&F NEWS](#)

[PARISH NEWS](#)

[COMMUNITY  
NEWS](#)



# FAITH & COMMUNITY

## BIG NEWS ABOUT MUFFIN MONDAY

Muffin Monday is coming back next week and in BIG MUFFIN NEWS we have been donated a new oven!!!!

A huge thank you goes to E&S Trading for donating the oven, which will ensure we can continue to bake plenty of fresh muffins every Monday for our school community.

The new oven will be going into the Canteen, with muffins to be sold from the canteen window from 3pm each Monday throughout Term.

We look forward to our community's continued support of this social justice initiative.

## VISIT FROM MELBOURNE FOOTBALL CLUB

On Monday, our Year 6 students had the wonderful opportunity to meet and speak with players from the Melbourne Football Club.

The players shared inspiring stories about their football journeys and spoke about the strong connections between success in sport and success at school. They emphasised the importance of teamwork, both on and off the field and how working together, supporting one another, and striving for shared goals are essential in all areas of life.

It was an engaging and memorable session, and our students thoroughly enjoyed learning from the players' experiences and advice.

We thank the Melbourne Football Club for visiting and inspiring our future leaders!



THANK  
YOU







[CONTENTS](#)

[PRINCIPAL'S NEWS](#)

[LEARNING & TEACHING](#)

[WELLBEING](#)

[FAITH & COMMUNITY](#)

[NURSES NEWS](#)

[CO-CURRICULAR  
NEWS](#)

[IMPORTANT DATES](#)

[P&F NEWS](#)

[PARISH NEWS](#)

[COMMUNITY  
NEWS](#)



# FROM THE NURSES

As the winter months near, susceptibility to influenza and other respiratory illnesses increases. It is important to maintain the health and safety of our children and community by adhering to a few easy safety measures.

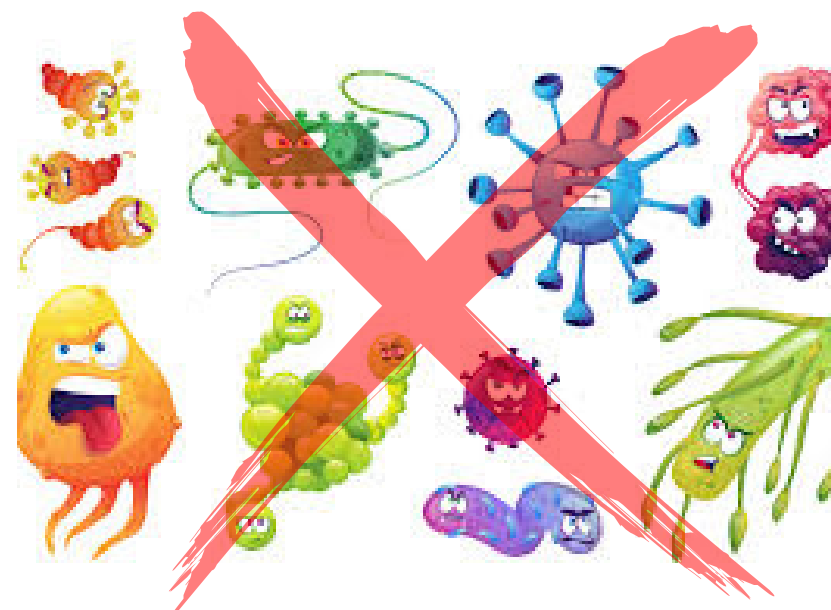
Remember to focus on good hygiene practices such as frequent handwashing, covering coughs and sneezes using the vampire sneeze (sneezing/coughing into the crook of your elbow) and staying home when sick to avoid the spread of germs and illnesses.

Here are some helpful resources to browse:

<https://www.vic.gov.au/stay-well-winter>

<https://www.betterhealth.vic.gov.au/healthyliving>

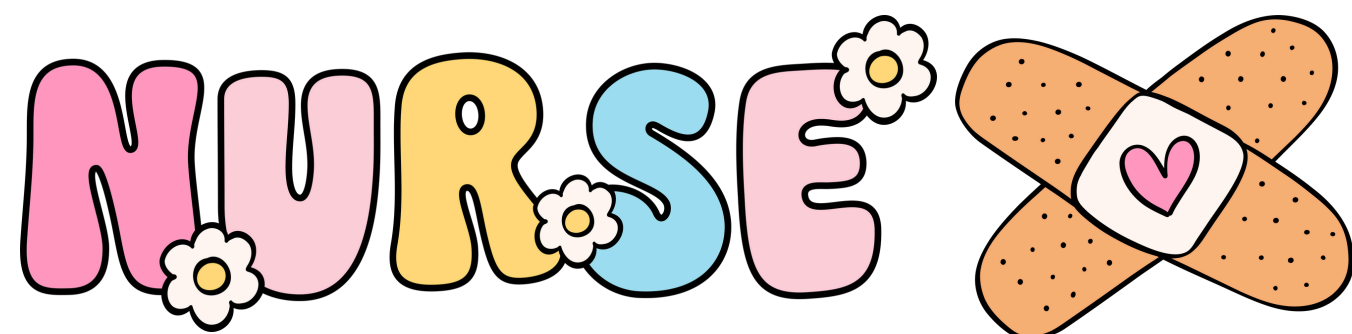
<https://www.health.vic.gov.au/media/20644>



Remember: if your child requires any medication to be administered by the school, please deliver it to the school Office (not classroom). Please ensure all medications are in a snap lock bag (or equivalent) and clearly labelled with the child's name and class and a medication administration form has been completed (available from the Office).

If you have any questions, please know our hours are 10.30am–3pm. We can be contacted during these hours on 0448 782 847.

Daniella and Ruby  
Registered Nurses







# CO-CURRICULAR NEWS

**Enrol NOW for Term 2 2025**  
LIMITED PLACES AVAILABLE

**FEDPAS**  
Film, Entertainment and Drama  
Performing Arts School

Thursday's @ 4pm & 5pm  
St Peter's Primary School, East Bentleigh.

Students can choose to do a single stream  
or a double stream (2 classes @ 4pm and 5pm)...

To enrol or for more info, email Jenni at  
[admin@fedpas.com](mailto:admin@fedpas.com) or call 0425 792 369!

**Junior FEDPAS (Prep & Yr 1)**  
Tailored for younger students to encourage a love of performing and develop their confidence. This stream gives our youngest students an introduction to Performance, Movement, Vocal Development and Stagecraft.  
**4pm only - 1 place available**

**Performance (Yr 2-6)**  
Explore acting, singing and movement through theatre games, improvisation, characterisation & script work. With a focus on developing self-confidence, imagination and teamwork skills, students will experience the joys of performing on the stage.  
**4pm Limited places available 5pm - Places available**

**Film & Tech (Yr 2-6)**  
Explore creativity through film. Learn basic techniques of film (ie. shots, angles, zoom, panning, focus, lighting, sound & editing). Create a short film, scripted and directed by yourself! Students will also explore backstage elements of theatre such as sound & lighting and how to run a show!  
**4pm 1 place available 5pm - Limited Places available**

FEDPAS is run by Drew Lane who teaches Performing Arts at St Peter's.  
Drew has a Masters Degree in Performing Arts and over 25 years  
experience in performance and theatre.

**St Peters OSHClub**  
**OSHC News**  
HOLIDAY HQ WEEK 1

**Jungle Rumble!**

**Monopoly Dreams**

**Week One: Game On!**  
Week one of our Games-themed holiday program was packed with excitement, strategy, and imagination! From the very first day, the children dove into a variety of games—from board games and card tournaments to life-sized outdoor versions of their favourites. Laughter filled the air as teams competed in relay races, trivia battles, and creative game-making challenges.  
The highlight of the week? Our unforgettable excursion to MONOPOLY DREAMS! The kids were thrilled to step inside the world of the iconic board game, where they explored interactive zones, collected MONOPOLY money, and solved puzzles to unlock special surprises. It was a magical blend of play and adventure, sparking creativity and teamwork in every corner.  
With friendships forming and skills growing through every roll of the dice, week one set the stage for a fantastic fortnight of fun and games!

**St Peters OSHClub**  
**OSHC News**

**Tetris Waffles!**

**Week Two: Leveling Up the Fun!**  
Week two kept the energy high as we continued our Games-themed holiday adventure! Children immersed themselves in all kinds of playful experiences—from fast-paced outdoor challenges to quiet strategy games and everything in between. Each day offered new opportunities to work together, test their skills, and think creatively.  
We introduced game show-style quizzes, team obstacle courses, memory races, and even a "create-your-own-game" workshop where kids designed and played their own inventions. Indoors, popular classics like Uno, Guess Who, and Pictionary kept everyone engaged, while outside, capture the flag and parachute games brought the group together in active, collaborative play.  
As the week wrapped up, we celebrated with a friendly tournament day—complete with certificates, cheering squads, and plenty of smiles. The past two weeks were filled with connection, creativity, and joy—a true celebration of the power of games to bring people together!





[CONTENTS](#)

[PRINCIPAL'S NEWS](#)

[LEARNING & TEACHING](#)

[WELLBEING](#)

[FAITH & COMMUNITY](#)

[NURSES NEWS](#)

[CO-CURRICULAR  
NEWS](#)

[IMPORTANT DATES](#)

[P&F NEWS](#)

[PARISH NEWS](#)

[COMMUNITY  
NEWS](#)



# IMPORTANT DATES



**MONDAY 28 APRIL**

7pm to 8pm in the Staff room  
All parents & Guardians welcome



**TUESDAY 29 APRIL**

Author Tony Armstrong Visit  
Foundation & Grade 1 students



**WEDNESDAY 30 APRIL**

Year 5 students depart for Camp



**FRIDAY 2 MAY**



**TUESDAY 6 MAY**

Year 1 Excursion  
Bentleigh Secondary College



**WEDNESDAY 7 MAY**

School hall



**FRIDAY 9 MAY**

Students have the opportunity to  
purchase gifts at school



**FRIDAY 9 MAY**

The School's new green space  
Official Opening and Blessing.





# PARENTS & FRIENDS NEWS

## Mother's day Breakfast

**WEDNESDAY 7th MAY**

**7.15am to 7.45am AND**

**8.00am to 8.30am**

We warmly invite all mums and special friends in our school community to join us for a Mother's Day Breakfast on Wednesday 7th May 2025.

To help us manage numbers, there will be two sittings, and due to space limitations, we kindly ask that only one adult per family attends, along with St Peter's students only (no younger or older siblings, please).

This year's menu includes:

Croissants, toast, Cereal, Fresh Fruit, Juices, Tea & Coffee

Cost: \$15 per family

<https://www.trybooking.com/DBDNF>

Please note: If you attend the earlier sitting, your child/children will be supervised by school staff until the school day begins. We look forward to sharing this morning with all our mums and special friends.

## CALLING ALL ST PETER'S DADS

We need your help to make our Mother's Day Breakfast extra special!

Come along and help pamper the mums in our school community. We're looking for dads to lend a hand with:

- Setting up the day before
- Cooking breakfast on the day
- Cleaning up afterwards

Every little bit helps, and your support will go a long way in showing our mums just how much they're appreciated. [Please use this link to sign up.](#)

Let's work together to make it a beautiful morning for the amazing mums in our lives!

Photo slideshow

A special part of this breakfast will be a slideshow featuring photos of our students and their mums/special friends. Not only will this be displayed during the breakfast, but we will put it in the Newsletter. If you would like to be featured in this please email [community@spbentleigheast.catholic.edu.au](mailto:community@spbentleigheast.catholic.edu.au) with no more than 3 photos of our students with their mums/special friends.

If you have any questions about any of these activities, please contact Michelle Gibson, [mgibson@spbentleigheast.catholic.edu.au](mailto:mgibson@spbentleigheast.catholic.edu.au)



NEXT





[CONTENTS](#)

[PRINCIPAL'S NEWS](#)

[LEARNING & TEACHING](#)

[WELLBEING](#)

[FAITH & COMMUNITY](#)

[NURSES NEWS](#)

[CO-CURRICULAR  
NEWS](#)

[IMPORTANT DATES](#)

[P&F NEWS](#)

[PARISH NEWS](#)

[COMMUNITY  
NEWS](#)



# PARENTS & FRIENDS NEWS

## MOTHERS DAY STALL

FRIDAY 9TH MAY

As part of our Mother's Day celebrations, we will be holding our Mother's Day stall on Friday 9th May. Items will range between \$2 – \$8. Please have your child bring a bag for their purchases, coins and small cash notes.. and their enthusiasm to buy. These children love to shop! We would love some parents to help with the stall. We need 6–8 people at each session, 9.00am to 11.00am and 11.30am to 2.00pm. Please sign up here if you would like to volunteer: <https://signup.com/go/PoypszE> Dads are most welcome!



## Junior School Disco

FRIDAY 16th MAY

Kids, get ready to show off your dance moves!

2 x sessions will be held

- Prep to Year 2 from 5.00pm to 6.00pm
- Year 3 & 4 from 6.20pm to 7.20pm

Free Entry, no RSVP required

Bring your water bottle, but NO food please.

Supervised by teachers and P&F.

Front carpark will be open. Parents please watch out for kids walking across the carpark !

Parents just need to drop off kids at school hall & remember to pick them up! They'll be waiting at their class lines areas.



## St Peters Trivia Night

Saturday, 14th June

Save the Date for the annual St Peter's Trivia Night !!

This year's theme is

MASQUERADE

Tix \$30 | Tables of 10 | BYO snacks & drinks

More information and booking link will be shared in the coming weeks but in the meantime, mark it in your calendar, get your masks and costumes ready for a night of trivia and mystery





[CONTENTS](#)

[PRINCIPAL'S NEWS](#)

[LEARNING & TEACHING](#)

[WELLBEING](#)

[FAITH & COMMUNITY](#)

[NURSES NEWS](#)

[CO-CURRICULAR  
NEWS](#)

[IMPORTANT DATES](#)

[P&F NEWS](#)

[PARISH NEWS](#)

[COMMUNITY  
NEWS](#)



# PARISH NEWS



**St. PETER's**

844 Centre Rd, East Bentleigh 3165



**St. PAUL's**

122 Jasper Rd, Bentleigh 3204



**St. CATHERINE's**

2 Buchan St, Moorabbin 3189

We deeply respect the Aboriginal Community of Bunnerong upon whose land our parish resides

Please [click here](#) for the most recent Parish Bulletin

## Mass, Confession & Adoration Times

### Saturday

St Catherine's 8.30am

St Paul's 6.00pm

St Peter's 6.30pm

### Sunday

St Peter's 8.30am

St Paul's 9.30am

St Catherine's 10.30am

St Peter's 10.30am

St Peter's 5.30pm





[CONTENTS](#)

[PRINCIPAL'S NEWS](#)

[NURSES NEWS](#)

[LEARNING & TEACHING](#)

[CO-CURRICULAR  
NEWS](#)

[WELLBEING](#)

[IMPORTANT DATES](#)

[FAITH & COMMUNITY](#)

[P&F NEWS](#)

[PARISH NEWS](#)

[COMMUNITY  
NEWS](#)



# COMMUNITY NEWS

## Scholastic Book orders

Catalogues have been sent home with students.  
Orders can be made online, or via the office by May 8.

**ISSUE 3 2025 SCHOLASTIC Book Club**  
READ EVERY DAY! READ MORE IN MAY!  
ORDERS DUE BACK BY: [Blank Box]  
Every Book Club LOOP order sends a \$5 PROMO CODE to your inbox each week.

**BEASTIE BROS**  
Includes a special robot!  
NEW! HALF PRICE! \$11  
NEW! The Calabog Police Crime  
Two tiny heroes try to stop a dumpy beetle's evil plan!  
100 pp. AGES 4+ \$10.99

**I SURVIVED**  
Includes a special robot!  
NEW! HALF PRICE! \$11  
NEW! I Survived the Great Inland Flood, 1999  
A tale full of sticky molasses, explosions and floods! Current's friend! 160 pp. AGES 8+ \$10.99

**BABY-SITTERS LITTLE SISTER**  
Includes a special robot!  
NEW! HALF PRICE! \$10  
NEW! Karen's Police  
When Karen's sister goes missing, she'll use her detective skills to find her! 140 pp. AGES 7+ \$9.99

**CARTOONISTS CLUB**  
Includes a special robot!  
NEW! HALF PRICE! \$10  
NEW! The Cartoonists Club  
Mia and her friends create a club for comic artists. 100 pp. AGES 10+ \$9.99

**CAT RUN**  
Includes a special robot!  
NEW! HALF PRICE! \$9  
NEW! Cat on the Run  
Hidden layers! Brain's mischief! (Intense reveal!) This cat is in trouble! 100 pp. AGES 7+ \$10.99

**WEIRD DO**  
Includes a special robot!  
NEW! HALF PRICE! \$9  
NEW! Weird Power!  
Dad helps Max and his friends solve for the weird! 160 pp. AGES 7+ \$10.99

**PIZZA TACO**  
Includes a special robot!  
NEW! HALF PRICE! \$10  
NEW! Book Club!  
Pete and Taco decide to finish their own book. 70 pp. AGES 4+ \$9.99

**GOTCHA!**  
Includes a special robot!  
NEW! HALF PRICE! \$10  
NEW! Gotcha!  
Spot the clues to find the burglar! 30 pp. AGES 4+ \$9.99

**WOMBAT.**  
Includes a special robot!  
NEW! HALF PRICE! \$10  
NEW! Wombat!  
A hilarious and hilarious journey into the secret world of a wombat. 30 pp. AGES 7+ \$9.99

**EVERY CHILD DESERVES A BOOK \$3**

**Take the 31-Day Challenge!**

**Junior Sports Program at**  
Springvale Indoor Sports  
Ages: 5-11 y.o  
Day&Time:  
Mondays & Wednesdays  
5:30-6:30PM  
Costs: \$15/session

**GET READY TO**  
✓ Develop Essential Skills  
✓ Make Friends  
✓ Get Active  
**REGISTER NOW**  
(03) 9547 2555

**Kids Parties**  
Space Jump Party  
• Dodgem Car Party  
• Sports Party  
• Bubble Soccer Party  
• Nerf Party  
• Lasertag Party

**INDOOR SPORTS SPRINGVALE**  
BASKETBALL  
TENNIS  
CRICKET  
SOCCER



**Come & Try CALISTHENICS at Emmanuel**

**DANCING - ACRO - BALLET  
ACTING - APPARATUS - GAMES  
TEAMWORK - FUN - PERFORMANCE**

**TINY TOTS (3-5 YEARS)  
SATURDAYS 9:00 - 10:00AM**

**RECREATIONAL CLASS (5-10 YEARS)  
MONDAYS 4:45 - 5:45PM**

**TINIES (7 YEARS & UNDER)  
SATURDAYS 9:00 - 10:45AM**

**SUB JUNIORS (10 YEARS & UNDER)  
SATURDAYS 11:00AM - 2:00PM**

**REGISTER FOR A FREE TRIAL**

For more info: [admin@emmanuelcalisthenics.com.au](mailto:admin@emmanuelcalisthenics.com.au) or Christie 0403 313 990





[CONTENTS](#)

[PRINCIPAL'S NEWS](#)

[LEARNING & TEACHING](#)

[WELLBEING](#)

[FAITH & COMMUNITY](#)

[NURSES NEWS](#)

[CO-CURRICULAR  
NEWS](#)

[IMPORTANT DATES](#)

[P&F NEWS](#)

[PARISH NEWS](#)

[COMMUNITY  
NEWS](#)



# COMMUNITY NEWS

  
HEISHIN-KAI  
KARATE-DO

平心会

# TRY KARATE

**FIRST MONTH FREE!**

**FITNESS • CONFIDENCE • SELF-DEFENCE • RESPECT**

**ALL WELCOME**

Book now at  
**TRYKARATE.COM.AU**

**HEISHIN-KAI KARATE-DO**  
Scout Hall, King George Park,  
East Boundary Road, Bentleigh East

Serving the  
local community  
for over 40 years

# OAKLEIGH SOUTH PRIMARY SCHOOL AUTUMN FETE

**SATURDAY**  
10th May  
10am - 4pm

**RIDES:**  
DODGEM CARS, SIZZLER, TEA CUPS,  
MUSIC TRIP, GIANT SUPER SLIDE,  
CHAIR - O - PLANE, DRAGON COASTER,  
BALL CRAWL, HURRICANE,  
KIDS CAROUSEL & KITE FLYER

**WRISTBAND TICKETS:**  
ORDER NOW VIA TRYBOOKING.COM  
FOR UNLIMITED RIDES BETWEEN 10AM - 3PM  
SEARCH 'OSPS EARLY BIRD RIDE TICKETS  
2025' OR QR CODE  
TICKETS AVAILABLE UNTIL:  
4PM FRIDAY 9TH MAY